

TSW 2140 E

**BERGMANN**

*...the specialists*

# Low-bed Universal Spreader

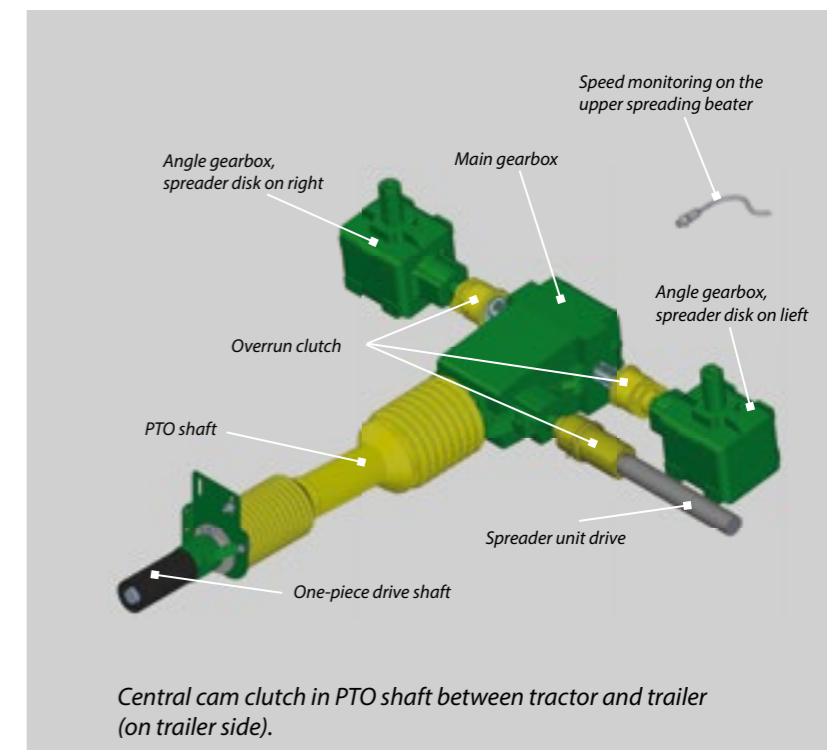
Effective operations and soil protection





### Central protection with speed monitoring

The heavy-duty drive train with a central protection and large gearboxes ensures a long service life.



# BERGMANN

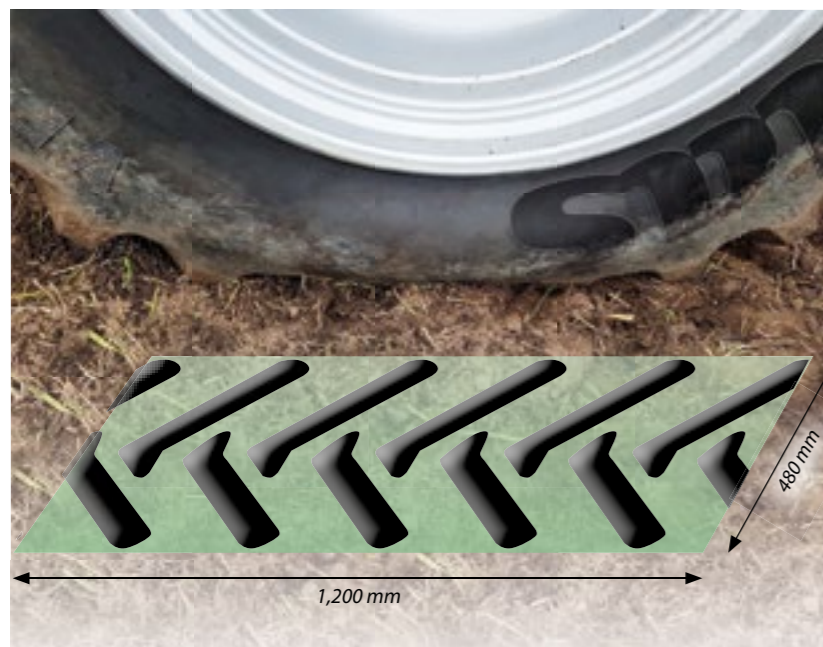
## Low-bed Universal Spreader TSW 2140 E

Single axle | 14,000 kg



**Tapered all-steel bin** with extra wide bridge and high load capacity. The inner width increases continuously from the front wall to the spreading unit. The result is no pressure build-up in the cargo space, and the load is evenly transported to the spreader unit.

**Spreader unit**  
1,400 mm throughput. Two horizontal beaters with bolted flat steel tines and a spreader disk unit with two disks, ea. 900 mm Ø and with four adjustable spreader blades.



The 480/95 R50 tires have a very large contact surface and at the same time low tire pressure to prevent damaging soil compaction.



The optional **cardanic drive** of the TSW spreader unit minimizes maintenance and provides high power reserves.

### Scaper floor with hydraulic drive

The four **round steel chains** (ea. 14 x 50 mm, 25 t per chain) are deeply embedded in large chain wheels (little wear and tear). The chains are stretched in pairs. Deflection pulleys with scrapers in the front and rear ensure safe scaper floor chain guidance. The scaper floor bars run on extra wear rails.



## Technical Data

Dimensions and weight		TSW 2140 E
		Single axle
Gross vehicle weight	kg	14,000
Dead weight	kg	5,480
Payload	kg	8,520
Bridge dimensions		
Length	mm	5,900
Width	mm	1,800
Height	mm	1,070
Vehicle dimensions		
Length	mm	8,730
Width	mm	2,550
Height	mm	3,310
Transfer height series	mm	2,400
Load capacity	m <sup>3</sup>	14
Power requirements	KW	81 - 125
	PS	110 - 170

### Optional:

- Side wall extensions
- Beater spreading unit with cardan drive
- Spread pattern limiter
- Central lubrication
- Weighing system
- BCT 20 comfort controls
- ISOBUS comfort controls
- Various lighting possibilities

**Our product range contains the right vehicle for every operation and every application.**

- ▶ Manure spreaders
- ▶ Universal spreaders
- ▶ Silage trailers
- ▶ Combi silage trailers
- ▶ Large capacity combi trailers
- ▶ Forage transport trailers
- ▶ Vario chassis systems
- ▶ Grain transfer wagons
- ▶ Beet overloading wagons
- ▶ Self-propelled systems

# BERGMANN

*...the specialists*

**Ludwig Bergmann GmbH  
Maschinenfabrik**

Hauptstraße 64-66 · 49424 Goldenstedt/Germany  
Tel.: +49 (0) 44 44-20 08-0 · Fax: +49 (0) 44 44-20 08 88  
info@l-bergmann.de

[www.bergmann-goldenstedt.de](http://www.bergmann-goldenstedt.de)

